

PROGIRA®

Release notes PROGIRA® plan
6.2.1

18th May 2018

Luleå Science Park 2

SE-977 75 Luleå, SWEDEN

www.progira.com

Table of Contents

1	General/Introduction	3
2	Base Module	3
2.1	General	3
2.2	Data Overview	3
2.3	ITU Data	3
2.4	FCC Data (US)	4
2.5	Custom Data	4
2.6	User Settings	6
2.7	Fs Setup	7
2.8	Population and area coverage	8
3	Frequency planning module	9
3.1	Coverage contour	9
3.2	Conformity check	9
4	Network verification module	10
4.1	Fs Prediction Analysis	10

1 General/Introduction

This document present updates in PROGIRA® plan version 6.2.1. This is an upgrade with mainly changes and bug fixes. If you should need further information regarding any of the modifications, please contact support@progira.com.

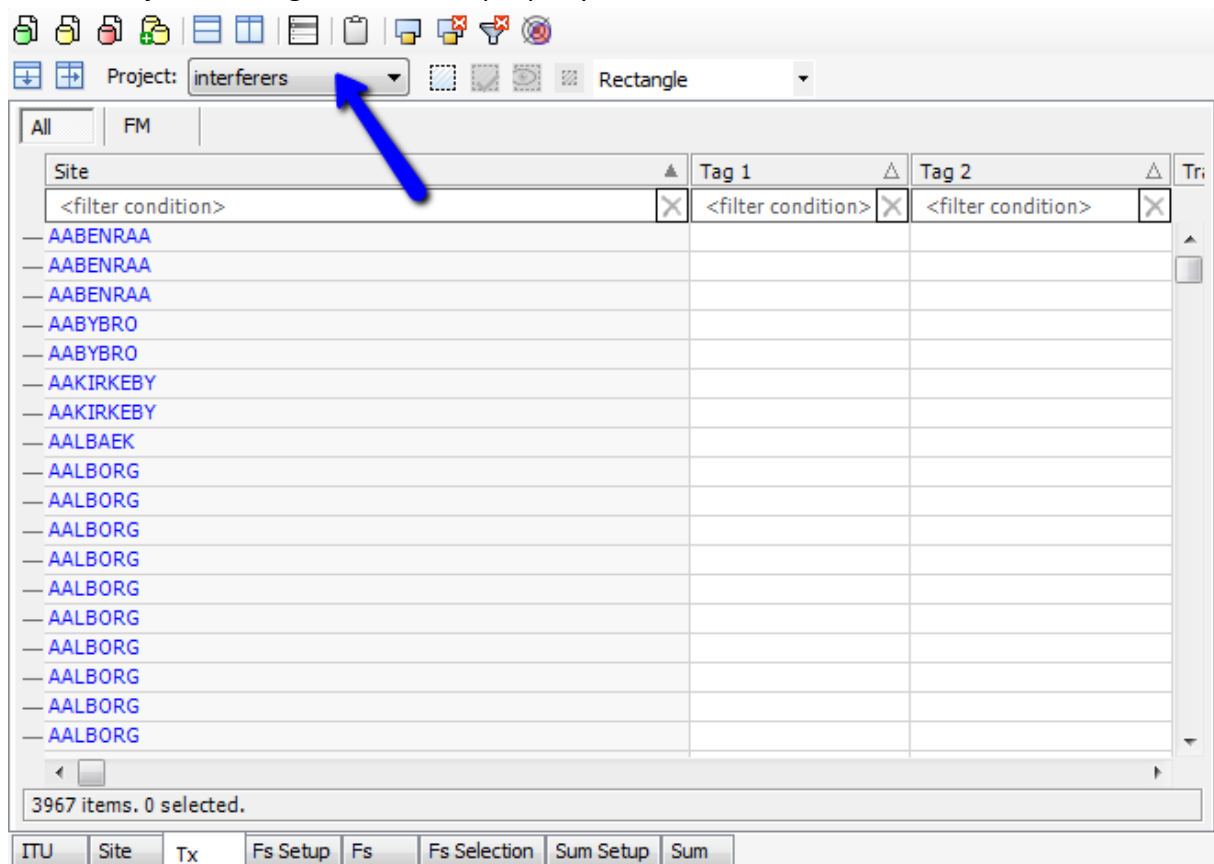
2 Base Module

2.1 General

FIXED: Sorting a column in a table did not work properly after changing the order of columns.

2.2 Data Overview

FIXED: Project filtering did not work properly.



The screenshot shows the PROGIRA software interface. At the top, there is a toolbar with various icons. Below the toolbar, there is a dropdown menu labeled "Project:" with the value "interferers" selected. A blue arrow points to this dropdown menu. Below the dropdown menu, there is a table with columns "Site", "Tag 1", and "Tag 2". The "Site" column contains a list of site names, including "AABENRAA", "AABYBRO", "AAKIRKEBY", and "AALBORG". The "Tag 1" and "Tag 2" columns contain filter conditions. At the bottom of the table, there is a status bar that reads "3967 items. 0 selected." Below the status bar, there is a row of buttons labeled "ITU", "Site", "Tx", "Fs Setup", "Fs", "Fs Selection", "Sum Setup", and "Sum".

2.3 ITU Data

CHANGED: When exporting to ITU notice file T02 the following modifications has been made:

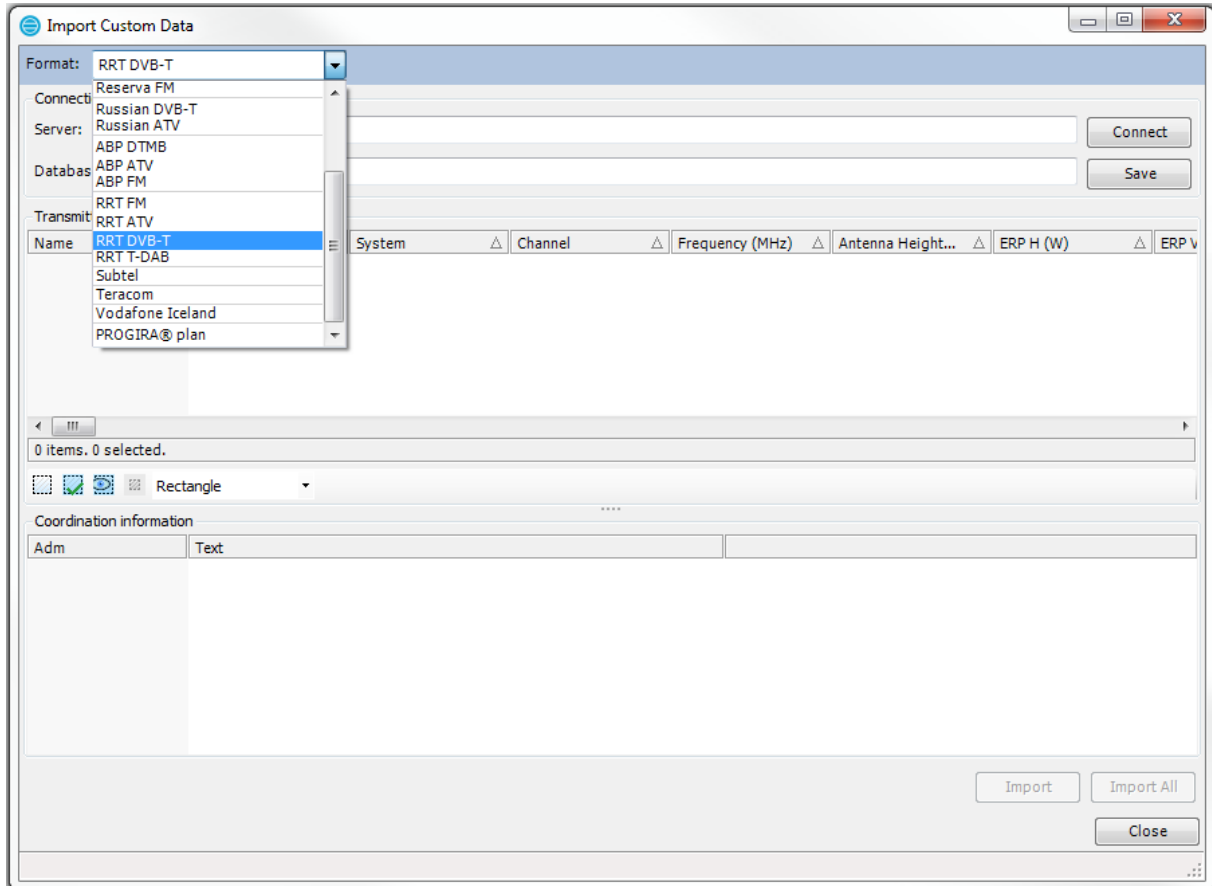
- t_bdwidth unit changed to kHz
- t_offset value added

2.4 FCC Data (US)

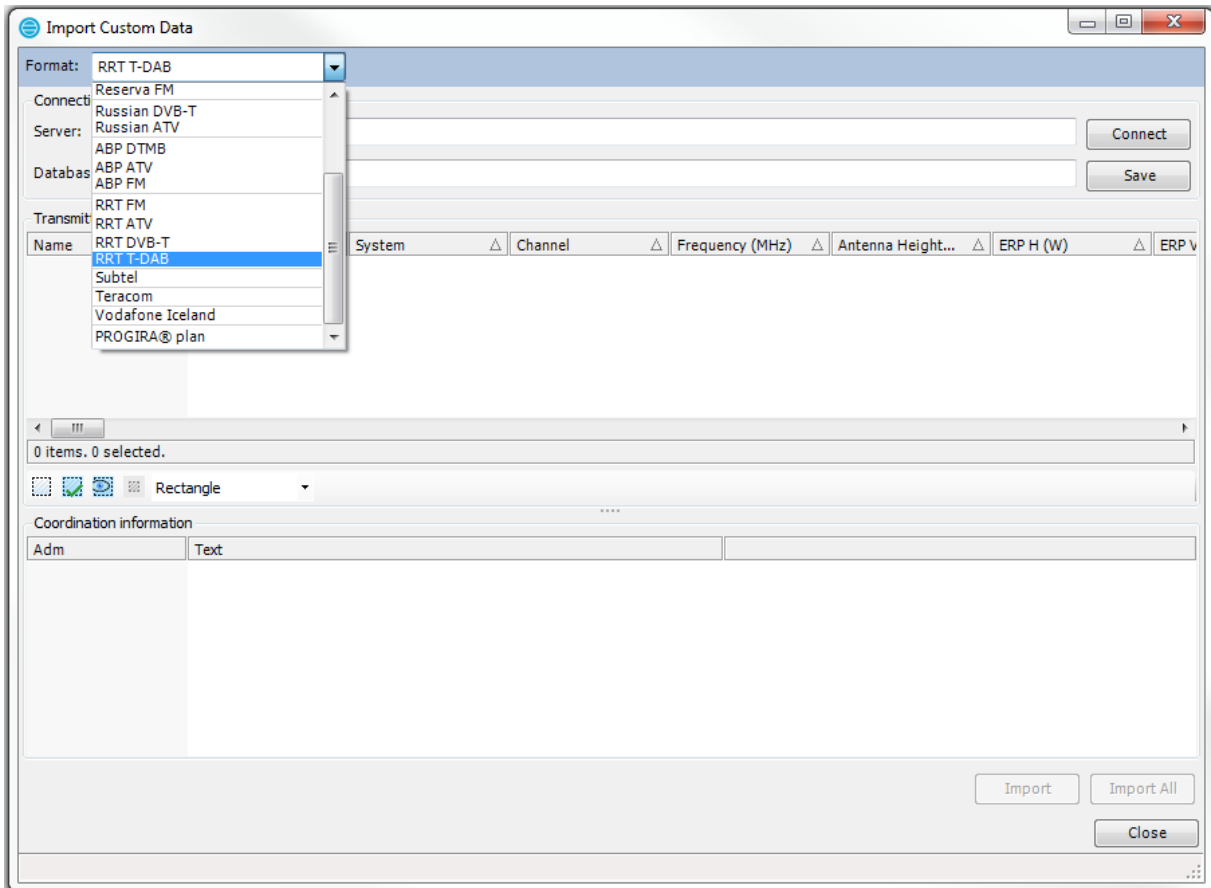
CHANGED: Added handling of AMSL heights in FCC LMS database. If HAAT value is missing in FCC LMS database, AMSL in combination with terrain height is used to calculate antenna height.

2.5 Custom Data

NEW: Added import of SFNId from RRT DVB-T data (Lithuania).

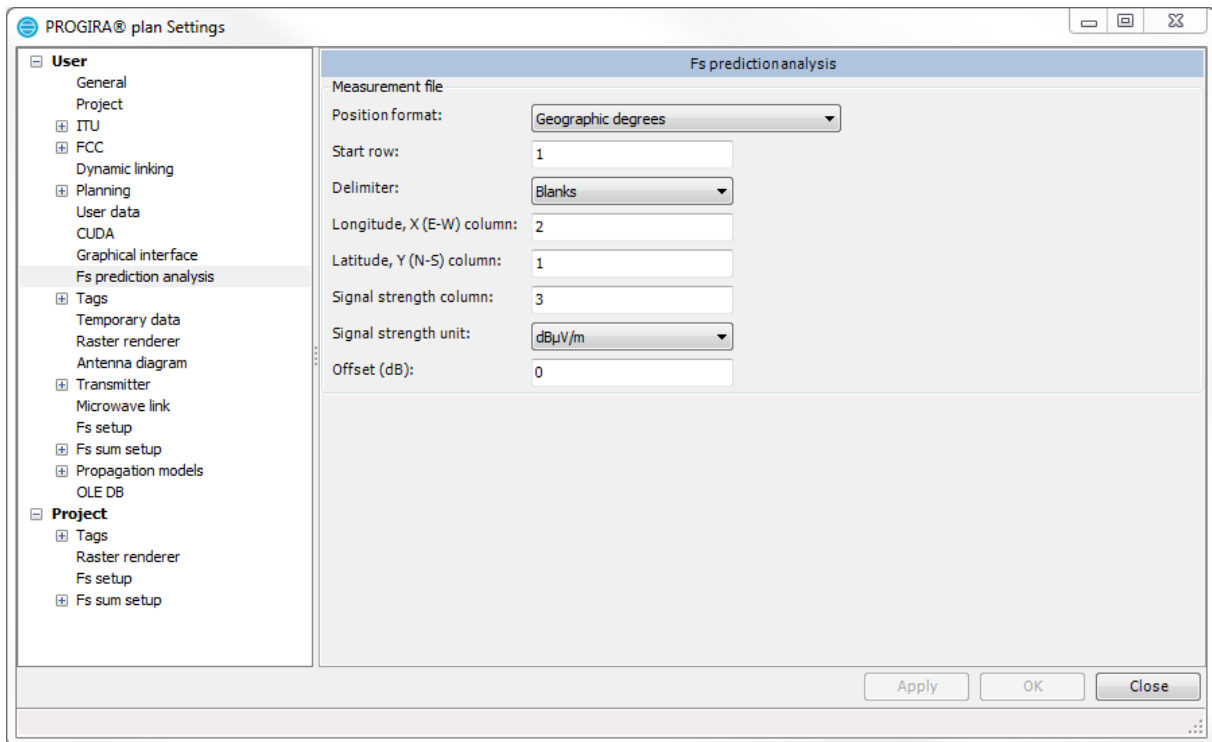


NEW: Added import of RRT T-DAB data (Lithuania).



2.6 User Settings

NEW: Default settings for managing measurement data files in Fs prediction analysis function.



2.7 Fs Setup

NEW: 1.7% of time added as option for CRC-Predict, ITU-R P.1546-4/5 and ITU-R P.1812-2/3.

Field Strength Prediction Setup

Setup name:

Site	Transmitter	Country	Longitud
AABENRAA	T01 92 MHz	DNK	009E2411

1 items. 0 selected.

Remove Add by Location... Add...

Propagation model: CRC-Predict

Rx antenna height (m): 10 Percentage time: 50

Percentage locations: 99, 95, 90, 50, 10, 5, 1.7, 1

Azimuth step (°): 0.2

Climate: Maritime Overland Clutter:

Output raster

Cell size (m): 50 Rectangular extent: CS: SWEREF99_TM

Radial distance (km):

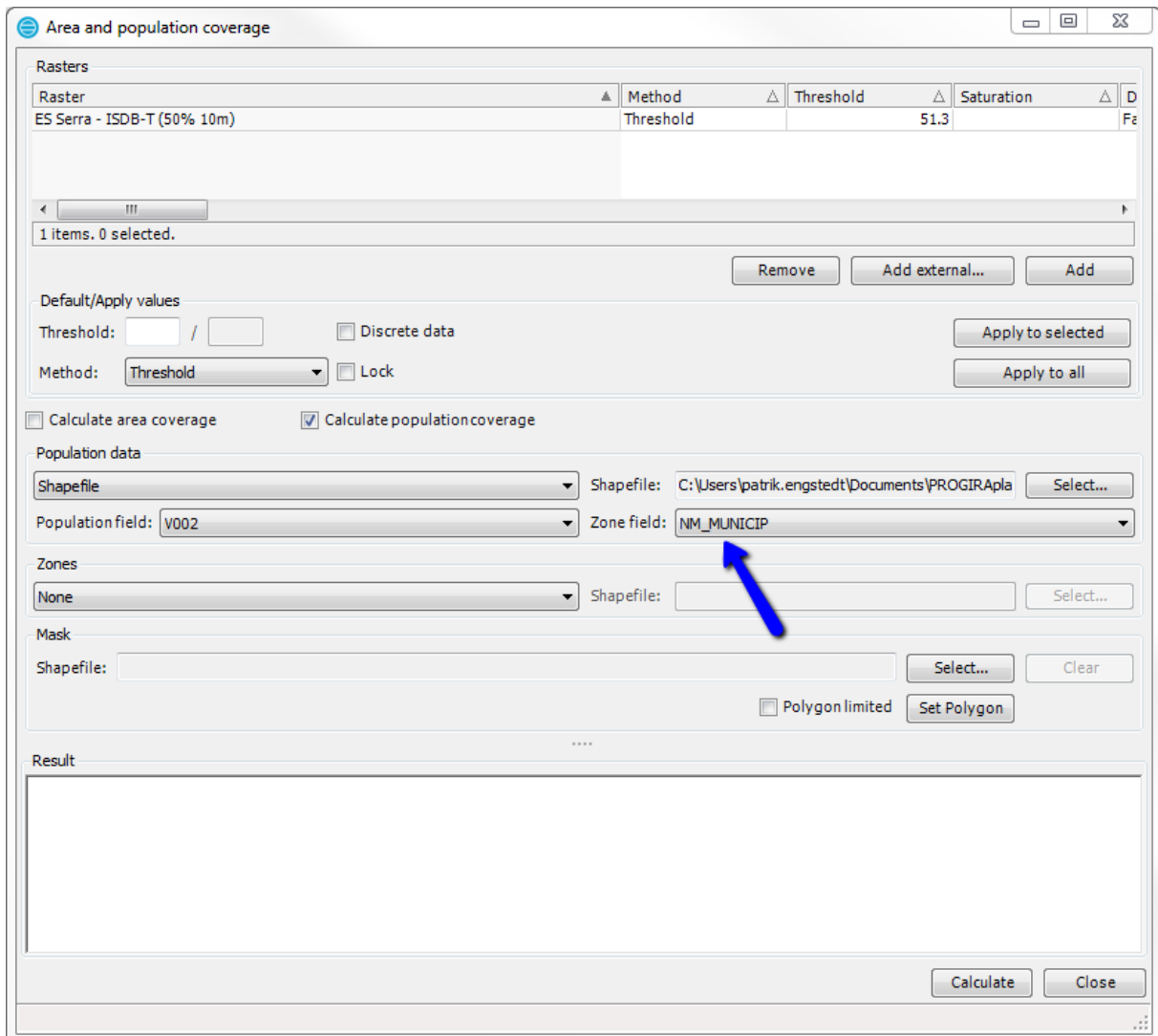
Mouse Clear Load Save...

Visible

Add to Job List OK Apply Close

2.8 Population and area coverage

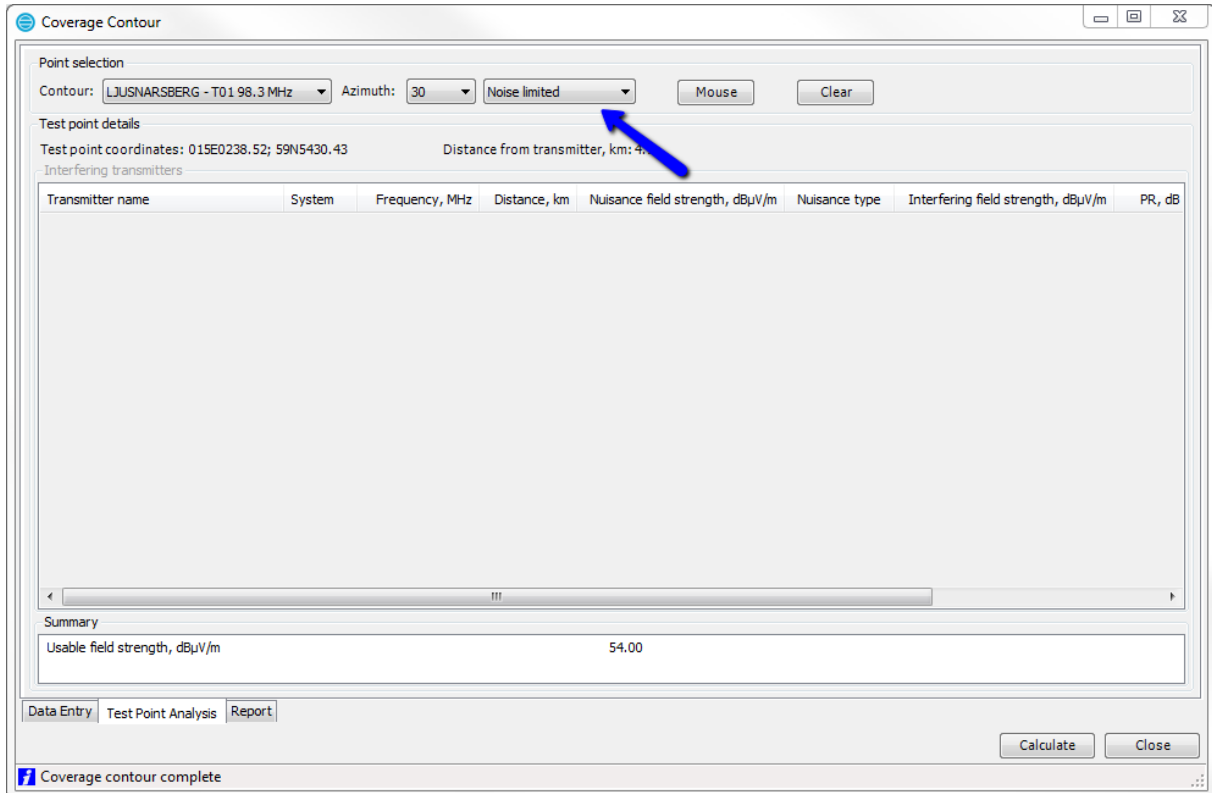
FIXED: When using a population shapefile and the option to calculate population coverage per zone (using Zone field), the total population per zone in the result was incorrect.



3 Frequency planning module

3.1 Coverage contour

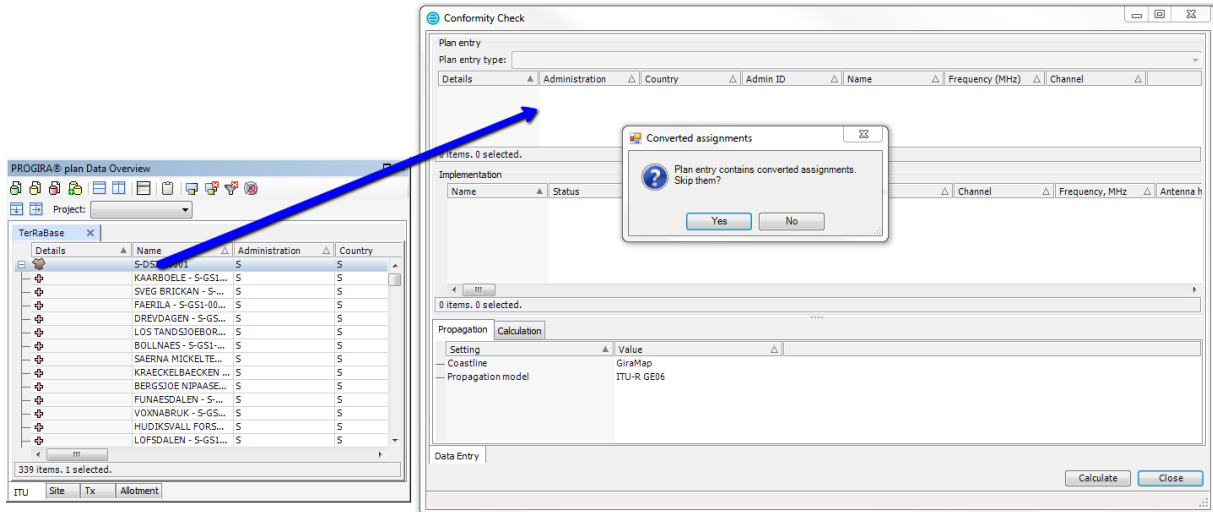
FIXED: Incorrect formatting of the contour selector combo box in coverage contour “Test Point Analysis” tab.



3.2 Conformity check

FIXED: When Plan entry is assignment or SFN, analysis of conformity check result sometimes crashed.

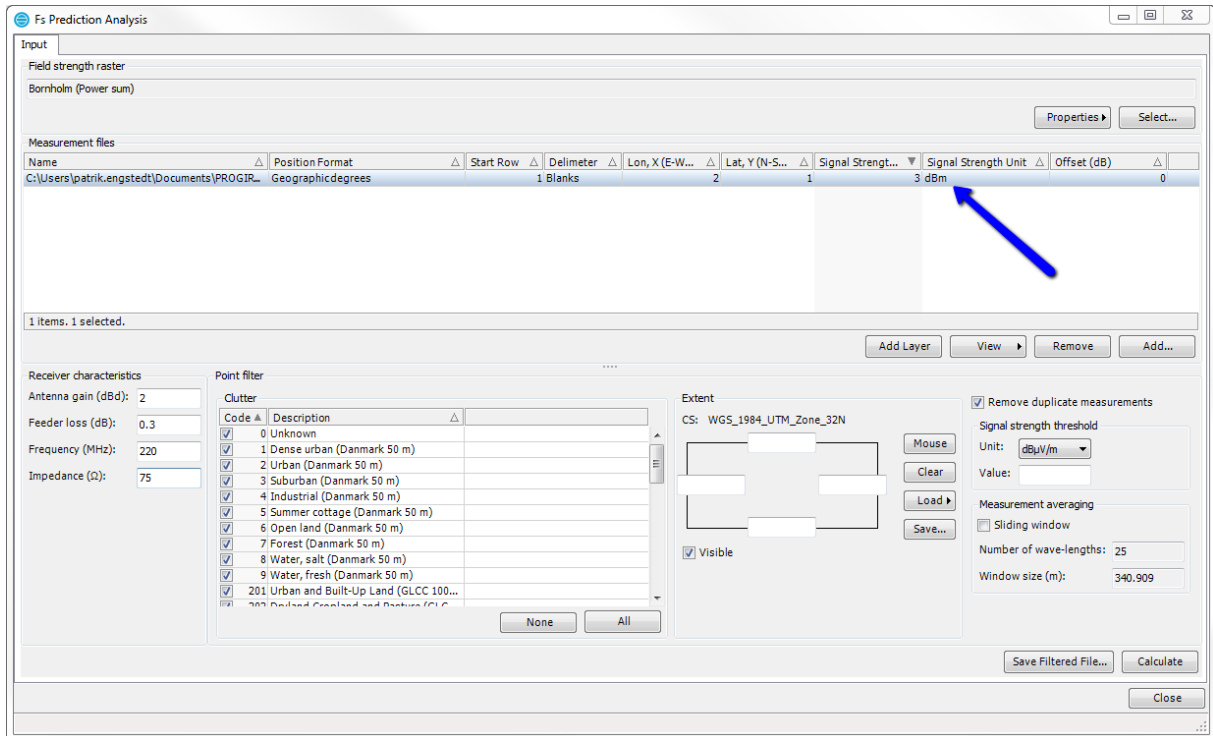
NEW: Conformity check asks user whether to remove all converted assignments from reference situation. Improved ITU and Entity property forms to distinguish assignment types when possible.



4 Network verification module

4.1 Fs Prediction Analysis

FIXED: dBm to dB μ V/m formula has been corrected. In earlier PROGIRA plan versions, this resulted in an incorrect result in cases where the signal strength in the measurement file was given in the unit dBm.



FIXED: Measurements points not within extent of geographical data are removed.